

Shine On, Harvest Moon (Am) – Version 1

(Nora Bayes and Jack Norworth, for “The Follies of 1908”)
Shine On, Harvest Moon by Leon Redbone (1977)

4/4 Time – Moderately

Intro Am E7 | Am E7 | Am E7 | Am E7

Am Night was mighty dark so you could hardly see, for the moon refused to shine. **E7**

Am Couple sitting underneath a willow tree, for love ___ they pine. **D7** **E7**

Dm Little maid was kind afraid of darkness, so she said, “I guess I'll go.” **C6**

D7 Boy began to sigh, looked up at the sky, told the moon his little tale of woe: **G7**

Chorus

A7 “Oh, shine on, shine on, harvest moon, up in the sky. **D7**

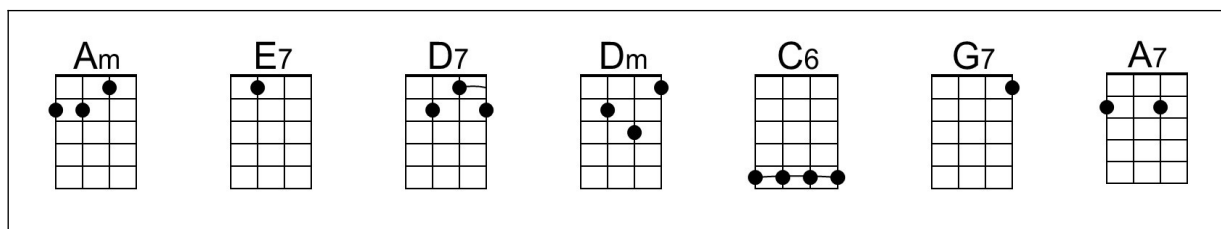
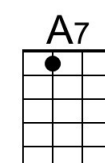
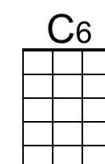
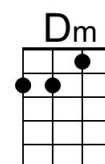
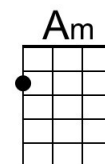
G7 I ain't had no lovin' since January, February, June or July. **C6**

A7 Snow time ain't no time to stay ___ out doors and spoon, **D7**

G7 So shine on, shine on, harvest moon, for me and my gal.” **C6**

Repeat From Top

Outro G7 C6



Shine On, Harvest Moon (Dm) – Version 1

(Nora Bayes and Jack Norworth, for “The Follies of 1908”)
Shine On, Harvest Moon by Leon Redbone (1977)

4/4 Time – Moderately

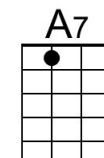
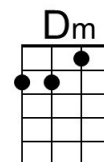
Intro Dm A7 | Dm A7 | Dm A7 | Dm A7

Dm **A7**
 Night was mighty dark so you could hardly see, for the moon refused to shine.

Dm **G7** **A7**
 Couple sitting underneath a willow tree, for love ___ they pine.

Gm **F6**
 Little maid was kind afraid of darkness, so she said, "I guess I'll go."

G7 **C7**
 Boy began to sigh, looked up at the sky, told the moon his little tale of woe:



Chorus

D7 **G7**
 "Oh, shine on, shine on, harvest moon, up in the sky.

C7 **F6**
 I ain't had no lovin' since January, February, June or July.

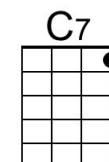
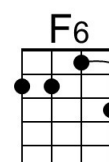
D7 **G7**
 Snow time ain't no time to stay ___ out doors and spoon,

C7 **F6**
 So shine on, shine on, harvest moon, for me and my gal."



Repeat From Top

Outro C7 F6



--	--	--	--	--	--	--	--

Shine On, Harvest Moon (Em) – Version 1

(Nora Bayes and Jack Norworth, for “The Follies of 1908”)
Shine On, Harvest Moon by Leon Redbone (1977)

4/4 Time – Moderately

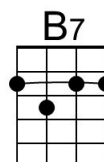
Intro Em B7 | Em B7 | Em B7 | Em B7

Em Night was mighty dark so you could hardly see, for the moon refused to shine. **B7**

Em Couple sitting underneath a willow tree, for love ___ they pine. **A7** **B7**

Am Little maid was kind afraid of darkness, so she said, "I guess I'll go." **G6**

A7 Boy began to sigh, looked up at the sky, told the moon his little tale of woe: **D7**



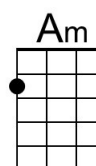
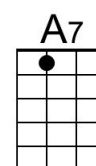
Chorus

E7 "Oh, shine on, shine on, harvest moon, up in the sky. **A7**

D7 I ain't had no lovin' since January, February, June or July. **G6**

E7 Snow time ain't no time to stay ___ out doors and spoon, **A7**

D7 So shine on, shine on, harvest moon, for me and my gal." **G6**



Repeat From Top

Outro D7 G6

